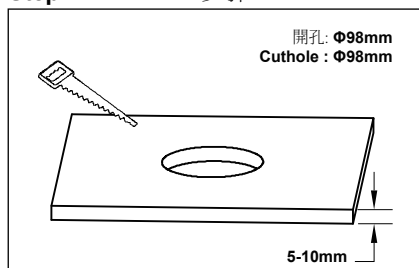




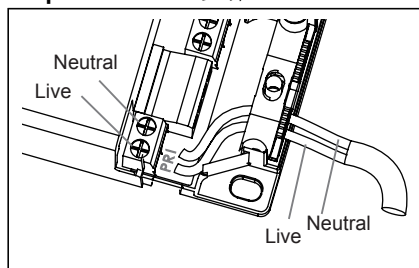
**Step.1** 步驟.一



**Make a same size cuthole as the picture on the ceiling.**

在天花板上開一個如圖所示的安裝孔。

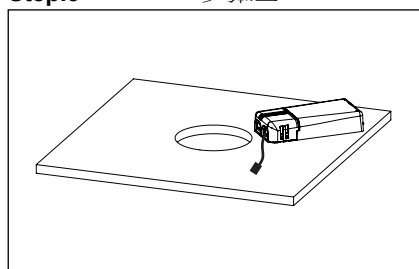
**Step.2** 步驟.二



**As shown in the figure, connect the live wire and neutral wire of the cable to the corresponding PRI slot in the driver .**

如圖所示, 將火線和中線與驅動器的PRI插口連接。

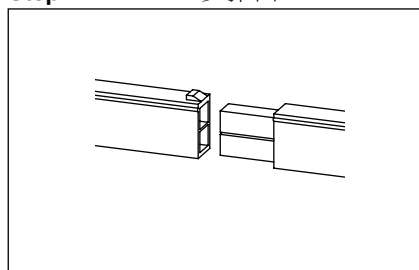
**Step.3** 步驟.三



**Put the driver into the opening of the ceiling and the driver installation complete.**

將驅動器放入天花開孔內，驅動器安裝完成。

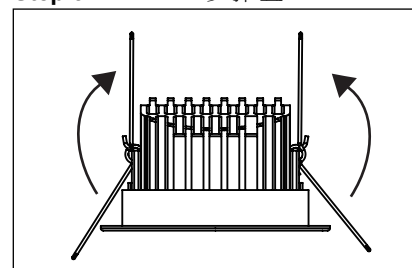
**Step.4** 步驟.四



**Connect the female connector and male connector, until you feel the connectors are lock.**

將公插和母插連接在一起，直致它緊扣一起。

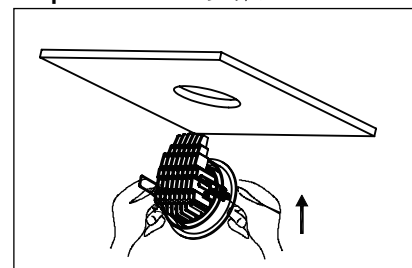
**Step.5** 步驟.五



**Press both sides mounting clip push up to the heatsink.**

將兩邊彈簧夾向上壓向散熱器。

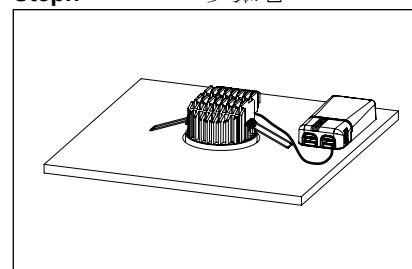
**Step.6** 步驟.六



**The whole fixture into the cuthole on the ceiling.**

將整燈裝入天花開孔內。

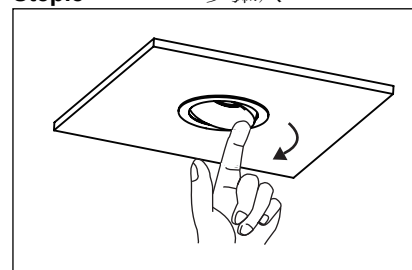
**Step.7** 步驟.七



**Installation is finished.**

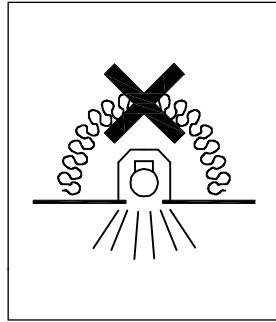
安裝完成。

**Step.8** 步驟.八



**Tilt to adjust the angle.**

傾斜前環以調整照射角度。



**Luminaires not suitable for covering with thermally insulating material.**

任何情況下,燈具都不能被隔熱襯墊或類似的材料覆蓋。



## INSTALLATION INSTRUCTION

安裝說明

### WARNING:

- The luminaire shall be installed by a qualified electrician and wired in accordance with the latest IEE electrical regulations or the national requirements.**  
本產品必須交由專業人士安裝，且電線必須符合最新電氣標準或國家標準法規。
- Please ensure the minimum of 40mm gap from the top.**  
必須確保本產品的頂部至少有40mm的間隙。
- There is risk of electric shock.**  
有觸電的危險。
- Please cut off the power before installation and maintenance.**  
在安裝或維護前，請先切斷電源。
- Please consult qualified engineer if any question about the installation instruction.**  
若有任何疑問，請向持有資格證書的工程師諮詢。
- Do not touch the reflecting surface inside the reflector by hand.**  
請勿用手觸摸反光罩內表面。
- This lamp is not suitable for the work after the installation of ceiling brush powder, brush powder is likely to damage the surface of the lamp and lead to the surface of the skin off.**  
此燈具並不適合安裝後再做天花刷粉工作，刷粉有可能破壞燈具表面處理而導致表皮脫落。
- All with corrosive cleaning supplies or chemical substances must not be exposed to the lamp so as to avoid damage.**  
所有帶腐蝕性清潔用品或化學物質不能接觸燈具以免造成損壞。

